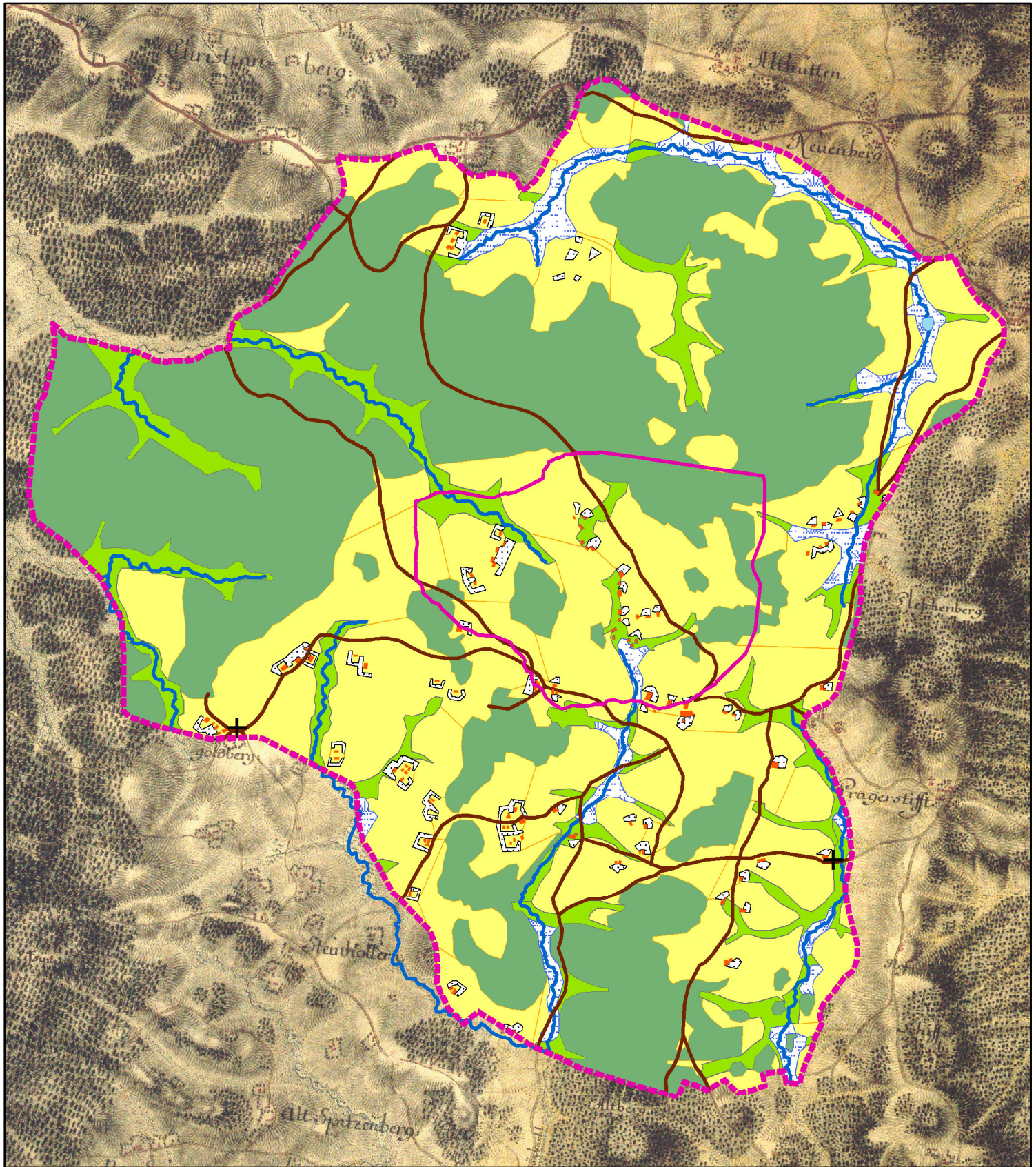









OBLAST ONDŘEJOV

interpretace mapy I. vojenského mapování



- | | | | | | |
|--|---------------------------|---|--------------|---|-----------------------------------|
|  | Hranice lokality Ondřejov |  | Komunikace |  | Lesy |
|  | Hranice lokality Chlumany |  | Vodní toky |  | Louky, pastviny, rozptýlená zeleň |
|  | Kaple, kříže |  | Vodní plochy |  | Skupiny stromů |
|  | Budovy |  | Mokřady |  | Orná půda |

